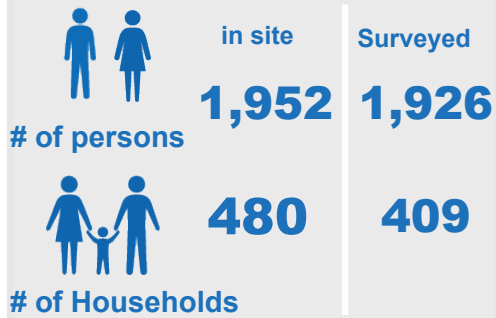


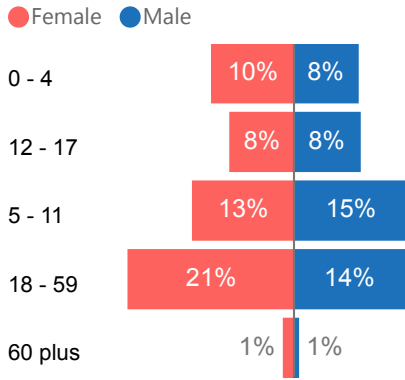
# PROTECTION MONITORING DASHBOARD - Mandruzi

**Overview:** This dashboard is prepared based on information collected by UNHCR protection monitors during the period from 24 July to 1 August 2019.



Data source: CCCM, 21 July 2019

## Demographic



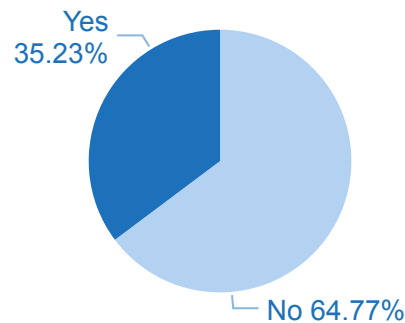
## % of persons with specific needs

**16 %**

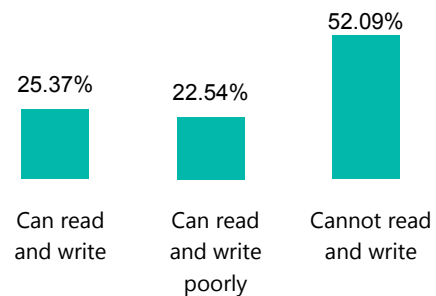
# of Person Without Legal Documentation

**155**

## % of persons in need of specialized services out of total of PSN

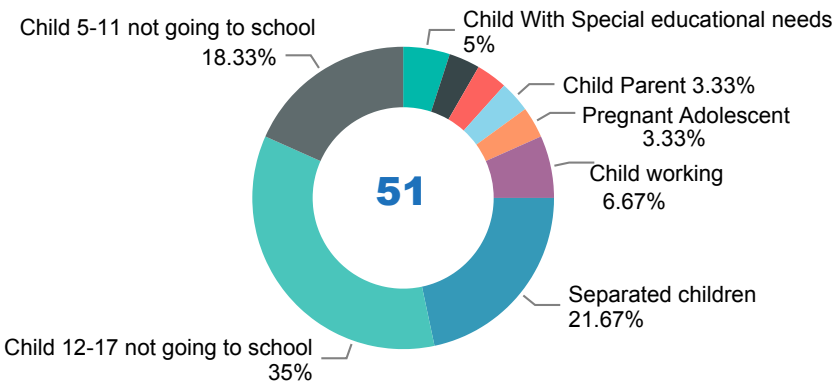


## Level of literacy\*

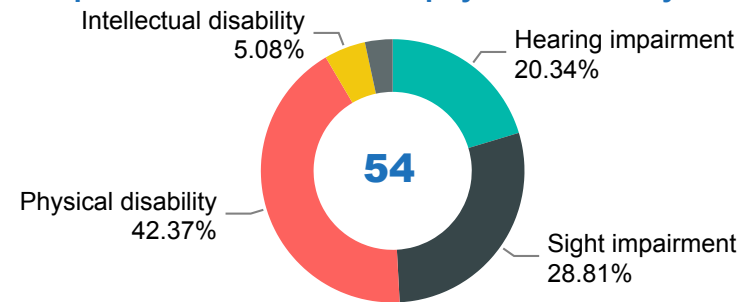


\* The level of literacy was requested from adolescents and adults only.

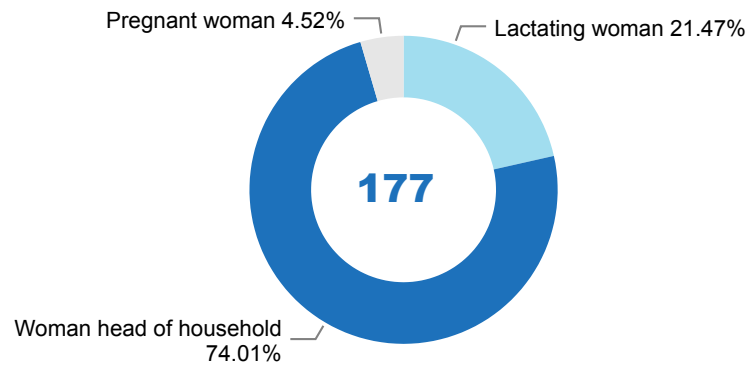
## Total of children at risk



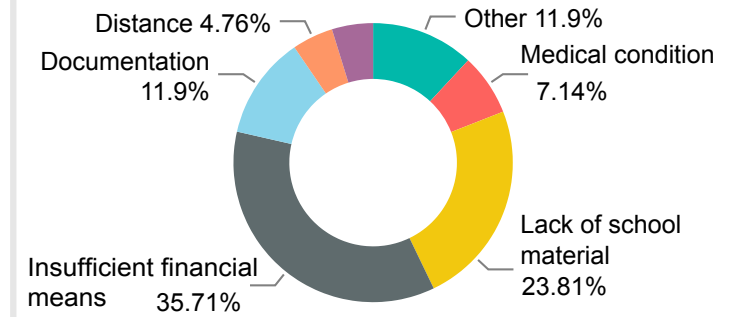
## Total persons with intellectual/physical disability\*\*



## Total of women at risk

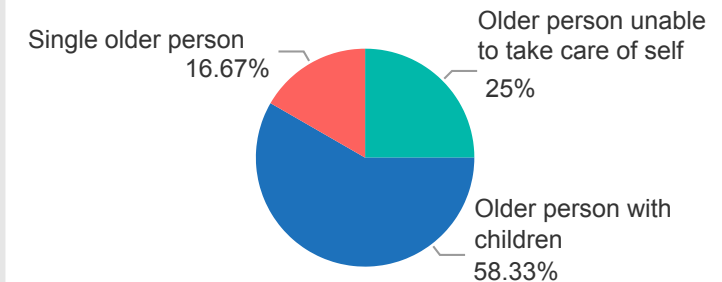


## Reasons mentioned as a barrier to education



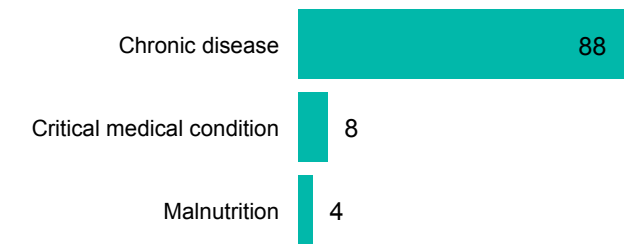
## Total of older person at risk (above 60 years old)

**22**



## Total # of persons with serious medical condition\*\*

**100**



\*\* Data collectors have received basic training on protection issues; they are not health practitioners able to detect mental or medical conditions.