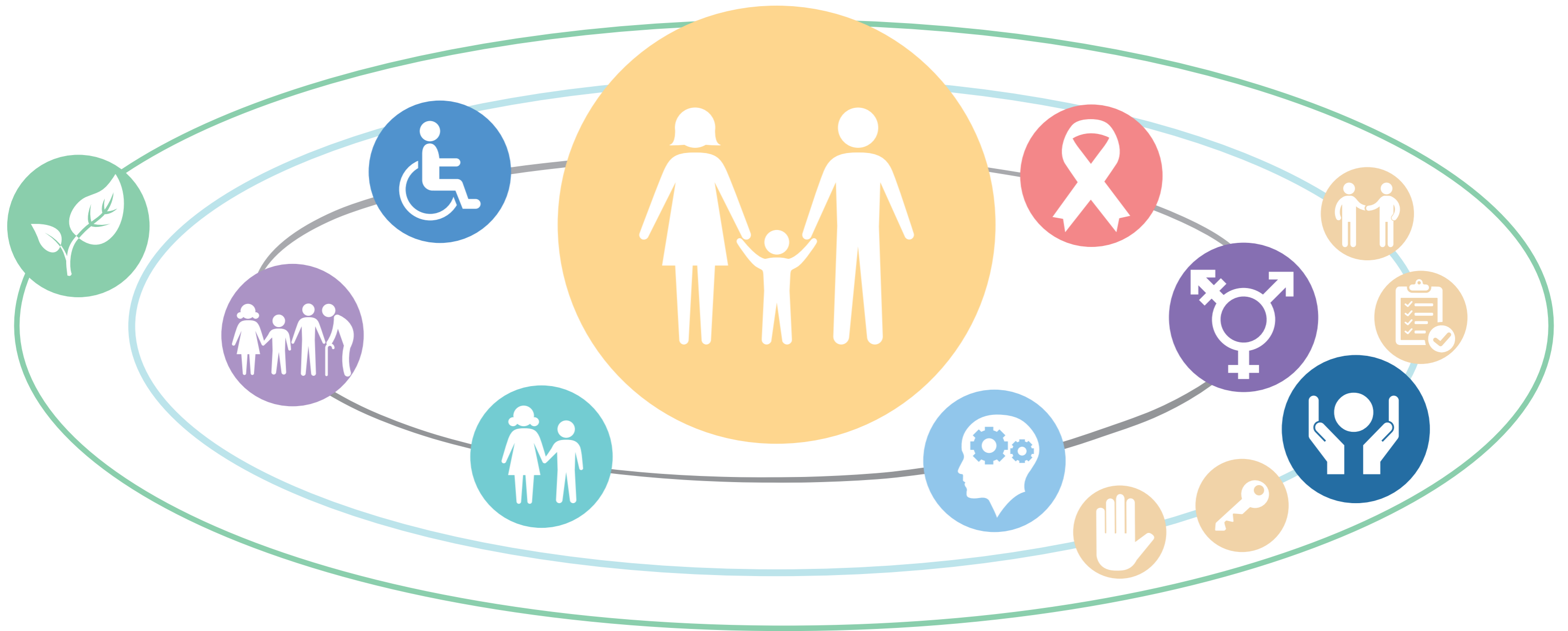


MAINSTREAMING CROSS CUTTING ISSUES IN HUMANITARIAN RESPONSE



Age, Gender and Diversity mainstreaming



Child Protection mainstreaming



Affected Populations



Mental Health and Psychosocial Support mainstreaming



Gender-Based Violence mainstreaming



Protection mainstreaming



Disability mainstreaming



HIV/AIDS mainstreaming



Environment

PROTECTION MAINSTREAMING PRINCIPLES



Prioritize safety & dignity, and avoid causing harm



Accountability



Meaningful Access



Participation and empowerment



The goal of this infographic is to support a better understanding of the links between the different cross-cutting initiatives and how they contribute to the protection of affected populations.

INTERPRETATION OF THE INFOGRAPHIC

The infographic illustrates the following messages:

- **Affected populations** are at the center of humanitarian action
- Mainstreaming seeks to address a particular issue or contribute to achieve a particular outcome without creating a specific sector, program or project for it
- Affected populations' different needs and capacities as well as their exposure to risks must be taken into account during the humanitarian response. Cross-cutting issues focus on particular areas of concern in humanitarian response and address individual, group or general vulnerability issues. Some of these issues are:
 - o **Age, Gender and Diversity**
 - o **Child Protection**
 - o **Gender-Based Violence**
 - o **Mental Health and Psychosocial Support**
 - o **Disability**
 - o **HIV/AIDS**
- Protection Mainstreaming comprises the four key principles of **prioritizing safety and dignity and avoid causing harm**, ensuring **meaningful access**, **accountability**, and **participation and empowerment**. The application of these principles allow for all the above described issues to be reflected during the response.
- Finally humanitarian practitioners must consider and respect the **environment** where the humanitarian response takes place to ensure contextually appropriate action which avoids environmental degradation putting a strain on affected populations' exposure to risks.